

Stitch Along Part 3 - 3/9/12 - 3/16/12

Author: Carrie Nedick
Company: Cherry Lane Designs
Copyright: 2012
Website: www.cherrylndesigns.com
Fabric: Aida
Grid Size: 25W x 25H
Design Area: 1.79" x 1.79" (25 x 25 stitches)

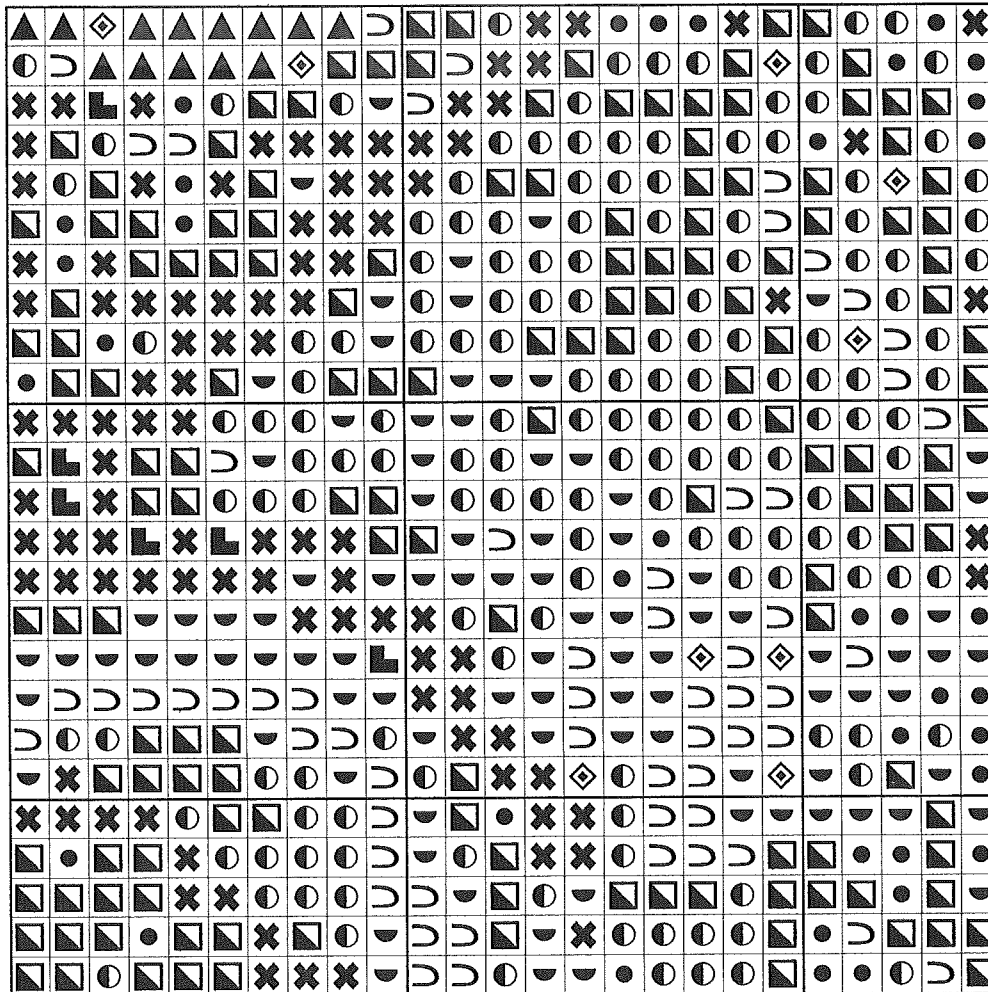
This is the top right corner, so it should be stitched above of Part 2 with the edges plush. Again, you can stitch it any way you like.

You can continue to use the same 9 shades/colors you were using before, or you can choose some new colors to switch it up a little bit. The legend on the chart starts with the darkest color on top (just an FYI).

I'm sorry I'm a week late on this one, you got a bonus week to finish Part 2 *wink* I'll post Part 4 on time next week (March 16), and we'll finish before the end of the month!

When you are finished with this part of the pattern, take a picture and post it to Cherry Lane Designs on Facebook. I'll make an album of everyone's projects.

As always I am encouraging you to break the rules! Have fun!



Legend:

