

# Stitch Along Part 1 - 2/17/12 - 2/24/12

**Author:** Carrie Nedick  
**Company:** Cherry Lane Designs  
**Copyright:** 2012  
**Website:** [www.cherrylainedesigns.com](http://www.cherrylainedesigns.com)  
**Fabric:** Aida  
**Grid Size:** 25W x 25H  
**Design Area:** 1.79" x 1.79" (25 x 25 stitches)

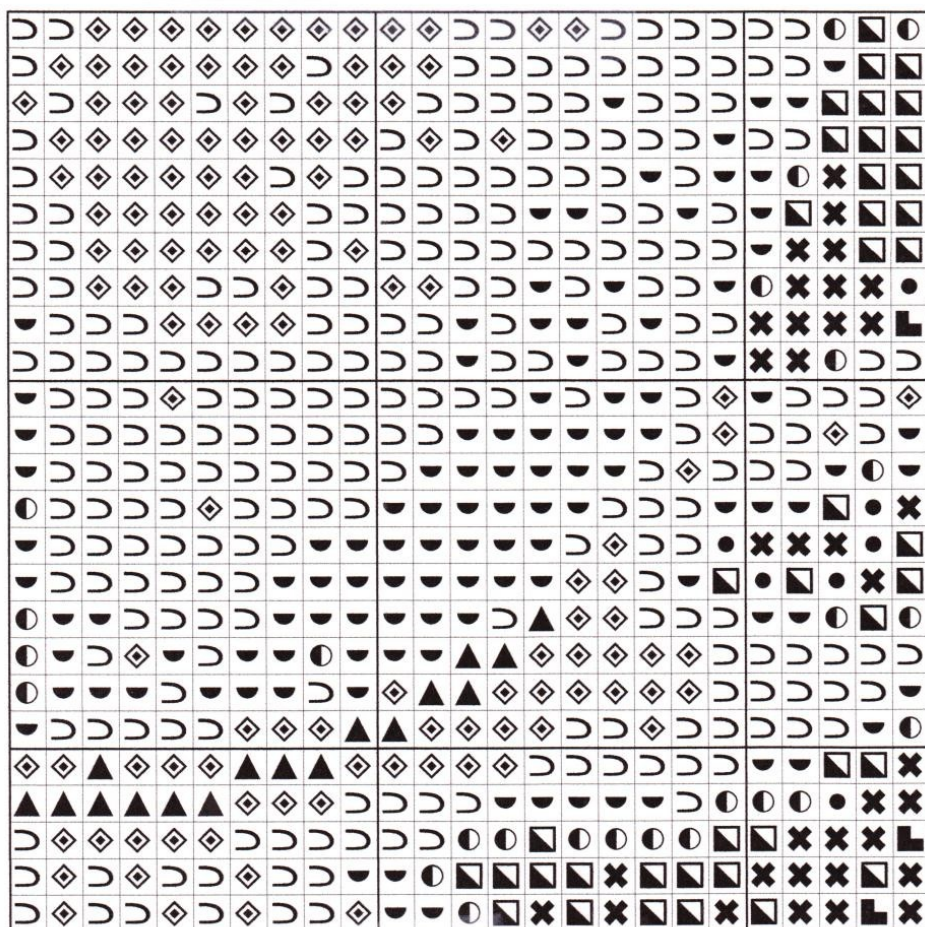
This is the bottom left corner of the original pattern, and is exactly one quarter of the finished design. You can stitch it any way you like; that's the fun of this stitch-along!

It requires the use of 9 shades of one color varying from very light (almost white) to very dark (almost black). You can choose whatever colors you would like to do, and don't be afraid to blend colors to get an "inbetween" shade. You could also pick 9 random colors or whatever you want to do! Once you pick your colors you can fill in the numbers on the chart so you don't forget. The legend on the chart starts with the darkest color on top (just an FYI).

This part of the stitch-along starts on Feb. 17, 2012 and the second part will be posted on Feb. 24. So you have a week to complete it if you want to keep up.

When you are finished with this part of the pattern, take a picture and post it to Cherry Lane Designs on Facebook. I'll make an album of everyone's projects.

I'm encouraging you to break the rules!



Legend:

